

# 健康生活

醫健通  
eHealth  
香港特約的健康通 HKSGOV.T

# 由e+開始

*Empower Your Health Enhance Your Life*





## 目錄

### Table of contents



	首次使用 Get Started . . . . .	1-2
	醫護機構二維碼 HCP QR Code . . . . .	3
	我的家庭成員 My Family . . . . .	4-5
	健康紀錄 Health Record . . . . .	6-7
	健康管理 Health Management . . . . .	8-9
	長者醫療券計劃 Elderly Health Care Voucher Scheme. . .	10-11
	預約紀錄/系統 Appointments/ Booking . . . . .	12-13
	醫療計劃 Health Programme . . . . .	14
	e+生活 e+Life . . . . .	15-17

## 首次使用 醫健通 流動應用程式？

Using eHealth App  
for the first time?



我已經登記醫健通  
Already registered with eHealth



太好了！你已經登記了電子健康紀錄互通系統（醫健通）。你可以根據指示輸入個人資料以進行身份驗證，並設立你的帳戶和密碼。

Congratulations! You have registered with the Electronic Health Record Sharing System (eHealth). You may input your personal information for identity verification. After identity verification, you can set up your username and password.

你亦可以使用「智方便」以完成身份驗證的步驟。

You may also complete identity verification by using “iAM Smart”.





## 我尚未登記醫健通 Not registered with eHealth yet



掃描二維碼 以遞交申請  
Scan QR code  
to submit application

你可以透過網上遞交登記醫健通的申請。如使用「智方便」遞交申請，更可於網上同時核實身份及完成醫健通登記。當你成功登記醫健通後，就可以使用醫健通流動應用程式！

You can register with eHealth online. If you submit your application with "iAM Smart", identity verification and eHealth registration can be completed online at the same time. Your eHealth account will be created. You can then use the eHealth App after successfully registered with eHealth!



## 我不確定 Not sure

如果你不確定是否已經登記醫健通，你可以透過提供所需的個人資料，讓我們核實一下！

If you are not sure whether you have registered with eHealth, you can provide necessary personal information to us for verification.



## 掃描醫護機構二維碼 給予互通同意

### Scan Healthcare Provider (HCP) QR code to give sharing consent

醫護機構已於診所張貼其醫健通二維碼。你只需透過醫健通流動應用程式，掃描二維碼，即可輕鬆給予醫護機構互通同意！

HCPs have displayed their eHealth QR code at their clinics. You can give sharing consent to HCP simply by scanning the QR code with eHealth App.



[陳大文醫務所]



### 透過醫健通流動應用程式給予互通同意 Give sharing consent via eHealth App

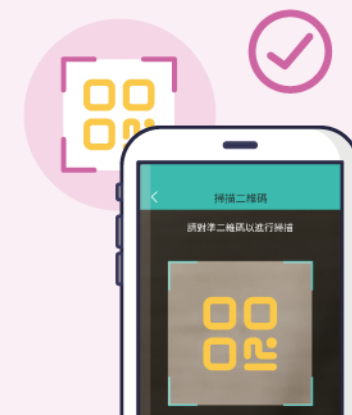
1 開啓醫健通流動應用程式，按右上角的掃描標誌，掃描醫護機構所展示的醫健通二維碼

Open the eHealth App, tap the scan button at the upper right corner and scan the eHealth QR code displayed at HCP

2 查閱醫護機構資料後按「給予互通同意」

View the information of the HCP, then tap "Give Sharing Consent"

3 選擇互通同意的期限，並按「確認」  
Select the duration of sharing consent and tap "Confirm"





## 添加我的家庭成員

### Add my family members

你可以透過添加我的家庭成員，瀏覽家人的各項健康紀錄、妥善安排家人的預約和見證小朋友的健康發展。

By adding “My family”, you can browse the health records of your family members, manage their appointments and accompany your children on their growth journey.



#### 方法1 Method 1

### 掃描二維碼 Scan QR code

- 1 點按個人頭像，  
打開我的二維碼

Click your profile picture to open “My QR Code”

- 2 另一位家庭成員在自己的  
醫健通流動應用程式打開  
二維碼掃描器進行掃描

Another family member open QR code scanner in the eHealth App to scan



### 記得接受添加 成員要求！

Remember to accept  
the request on adding  
family member!

在「照顧我的家庭成員」  
中接受照顧者要求

Accept Caregiver's request  
in “My Caregivers”



#### 方法2 (16歲以下的家庭成員) Method 2 (Family members below age of 16)

### 輸入資料 Input information

- 1 打開「我的家庭成員」頁面中的  
「添加家庭成員」

Go to “My Family” and click  
“Add Family Member”



- 2 輸入家庭成員資料，  
並確認和遞交

Input family member's information,  
confirm and submit



成功添加子女成為家庭成員後，  
就可以使用「兒童成長紀錄」功能  
記錄小朋友的成長足印！

After successfully adding your children  
as your family member,  
you can use the “Child Growth Record”  
function to record the footprints of  
your children's growth!







## 健康紀錄

### Health Record

你可以透過醫健通流動應用程式輕鬆查看各種由你授權的醫護機構存放的健康紀錄。

Through eHealth App, you can easily view various kinds of health records deposited by your authorised Healthcare Providers.



### 疫苗紀錄 Vaccines



簡單查看所有疫苗紀錄，你亦可新增疫苗紀錄或上載針咭作補充資料

Easy reference for all vaccine records and you may also supplement the records by self entry or uploading vaccine card

### 敏感 Allergy

掌握個人過敏和藥物不良反應紀錄

Master your personal drug allergy and adverse drug reaction record



### 藥物紀錄 Medications



藥物名稱及服用指示一目了然

Medication and dosage instruction at a glance

### 檢查紀錄 Investigations

任何時候查看及分享你的檢查報告

View and share your investigation reports at all times



### 醫療證明書 Medical Certificate



隨時查看、分享及存取相關的醫療證明書

Access, share and save the relevant medical certificates at any time

### 醫療文件 Healthcare Document

隨時查閱及輕鬆保存轉介信資料

View and easily save referral letter at any time





## 隨時查看你的血壓、 血糖、體重指數 和腰圍日記

Your Blood Pressure,  
Blood Sugar, BMI & Waist  
Circumference diary on-the-go



只需幾個步驟，添加健康指  
數，輕鬆管理健康

Only a few steps to add health data,  
easily managing your health



輕鬆查閱詳細紀錄及趨勢

View detailed  
records and trend easily



隨時隨地下載及分享報告給  
你的家人和醫護人員

Download and share your  
report with your family and  
healthcare professionals



提醒功能助你  
定時量度健康指數

Reminder function helps you to  
measure your health data regularly



BMI 寶寶立即為你分析  
體重指數和建議你的  
理想體重

BMI Buddy can analyse your  
weight and recommend your ideal  
weight



腰圍寶寶立即告訴你  
有沒有中央肥胖

Waist Circumference Buddy  
can tell if you have central obesity





## 長者醫療券計劃 (醫療券)

### Elderly Health Care Voucher Scheme (Voucher)

你可以透過醫健通流動應用程式，輕鬆得知醫療券的餘額及交易紀錄。

Through eHealth App, you can easily check your Voucher balance and transaction records.



如何查看醫療券餘額及交易紀錄？  
How to view my Voucher balance and transaction records?

1

按「醫療計劃」就可查閱你的醫療券戶口資料

Tap "Health Programme" to view your Voucher account details



2

按「長者醫療券計劃」就可以查閱醫療券餘額及詳細交易紀錄(日期、金額、獎賞(如有)、服務提供者及執業地點等)

Tap "Elderly Health Care Voucher Scheme" to view the Voucher balance and transaction details (date, amount, reward (if any), service provider's name, practice location, etc.)



配偶共用醫療券已推出！  
Shared Use of Vouchers between Spouses is already launched!



雙方戶口連結後，當你們其中一方的醫療券戶口內的餘額耗盡，即可以使用你配偶戶口內的醫療券餘額。

Once both accounts are paired up, either party can, upon exhaustion of your Voucher account balance, use the Voucher balance in your spouse's account.



掃描以了解如何登記及使用  
配偶共用醫療券

Scan to know more how to register and use Vouchers between spouses





# 預約紀錄/系統

## Appointments/ Booking

隨時隨地輕鬆查閱、添加及分享預約紀錄。醫健通流動應用程式亦整合不同的醫護機構預約系統，讓你預約流程更順暢。

Easily check, add and share appointment records anytime and anywhere. eHealth App also integrates different booking systems of HCPs to facilitate your appointment booking process.



使用醫健通「預約紀錄/系統」功能  
Using the eHealth "Appointments / Booking" Function



掌握每次預約紀錄  
按 "未來" 或 "過去"  
檢視相關預約

Every appointment at your control  
Tap "Upcoming" or "Past" to see related appointment record



簡單添加就診預約  
助你一站式管理

Add your appointment with ease  
Manage all your medical appointments in one place



一鍵分享預約詳情  
輕鬆與家人溝通

Share appointment details at your fingertips  
Communicating with your family made easy



整合不同的預約系統  
預約流程更順暢

Integrating with various booking systems  
Facilitate your appointment booking process







## 醫療計劃 Health Programme

全面了解你的醫療計劃，輕鬆查閱你參與的醫療計劃。助你精明規劃，讓你安枕無憂。

Get to know your health programmes in details and view the health programmes you participate in easily. Plan ahead wisely and effortlessly.



### 管理健康小幫手 Your dedicated health assistant

提醒你在各計劃的下一步，助你主動掌握自己健康

Always remind you of the latest information of the health programmes

### 我的地區康健中心會員證 My District Health Centre Membership Card

從流動裝置中顯示我的會員資料

Show my membership information on mobile device



## e+生活 e+Life

e+生活是醫健通推出的健康挑戰平台，用戶通過健康追蹤應用程式的對接，可記錄他們的活動水平及累積健康積分。

e+Life is a health challenge platform launched by eHealth. Through interface with fitness tracking applications, users will be able to log their exercise level to accumulate health coins.



### 方法1（16歲或以上的用戶） Method 1 (User aged 16 or above)



### 透過醫健通流動應用程式登入 Use eHealth App to login

1

點選「以醫健通流動應用程式登入」

Tap "Login with eHealth App"



2



透過醫健通流動應用程式成功登入後，隨即進行遊戲

Log in successfully via the eHealth App and enter the game.





## 方法2 (16歲以下的家庭成員)

Method 2 (Family members below age of 16)

### 掃描二維碼登入 Scan QR code to login

16歲以下人士先選擇「掃描二維碼登入。」  
同時，家長或照顧者需在另一流動裝置登入e+生活，顯示16歲以下人士的二維碼。

First, users aged below 16 can select "Scan QR code to login".

Meanwhile, parents and carers need to log in to e+Life on another mobile device to display QR code for the user aged below 16.



## 家長或照顧者的流動裝置

Mobile device of parents or carers

1



點選「我的」

Select "Me"

2

點選「我的家庭成員」

Select "My Family Members"



3

點選相應家庭成員的「顯示二維碼」

Select corresponding family members "Display QR code"



4



二維碼及登入驗證碼準備完成

QR code and login pin ready

## 溫馨提示

你要先在醫健通流動應用程式加入子女成為「我的家庭成員」！前往p.5了解更多！

## Friendly Reminder

You need to first add your child in "My Family" in the eHealth App! Go to p.5 to learn more!



掃描以瀏覽e+生活網頁

Scan to Visit e+Life Website





**立即下載**

**Download Now**



**瀏覽網頁**

**Visit Our Website**



**教學影片**

**Tutorial Video**



 3467 6300

 3467 6099

 [www.ehealth.gov.hk](http://www.ehealth.gov.hk)

 [ehr@ehealth.gov.hk](mailto:ehr@ehealth.gov.hk)



@electronic\_health\_record



**醫健通** Electronic Health Record  
Sharing System

